

To all our members celebrating March birthdays with a special shout out to our 80+ Club!

- \*Cheryl Larson \*Ivy Clements
- \*Sylvia Eckhardt
- \*Verna Aufenkamp
- \*Terry Siderius

## MEMBERS ARE ENCOURAGED

Check your Membership Renewal date. If you aren't sure, please call the office at 406-609-5351



Above: Member Joan Turner shares her family photo from the early 1900s. Joan says, "The best part of the presentation was

learning how these types of pictures could be preserved; also the apps one could use to trace one's lineage."

Thank you to everyone who participated in our Family Heritage event! You can explore the free services available at Kalispell FamilySearch Center at [tinyurl.com/BookAtKaliFSC](https://tinyurl.com/BookAtKaliFSC) to reserve a scanner, register for classes and join group activities!



### SAINT PATRICK'S DAY WORD SEARCH!

i r k a l e p r e c h a u n o k z o  
 n o s s j j l b r x v t l a d s e s  
 k i d v w r a x h o c v u w m q j j  
 d p f p x v p w b x k s c u b s k t  
 s c z y z i r e l a n d k o j s l d  
 p m s c l x p h a i s w c k m e i c  
 z g r r a i n b o w n g y x v y y r  
 f t v g r e e n b u w o x v j i t k  
 w u s h a m r o c k s l q f r d h z  
 h t m y y o t d v q o d p p m u f q  
 l w r z f v f n m t v i u k k r w p  
 b i h y y p v d z o g q x d x h d p

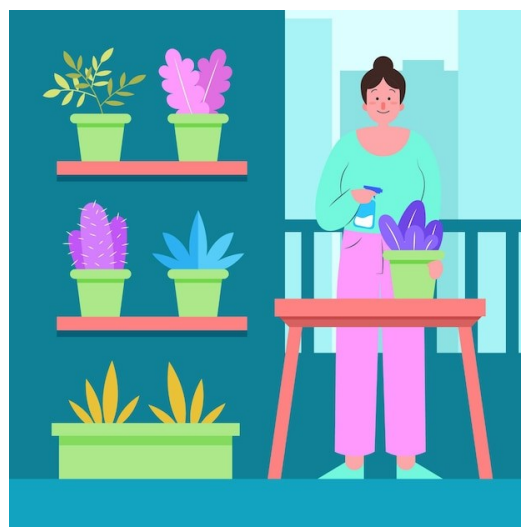
Rainbow, Gold, Leprechaun, Green, Ireland, Luck, Shamrock



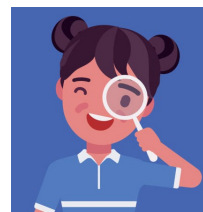
"I made green bread in the form of snakes for the serving table for a St. Patrick's Day party. Part of it was elevated. Guests pulled it apart to eat it. Fun." -KSC member Dana Muller

### INDOOR GARDEN WORKSHOP!

Come join us for a presentation on indoor gardening at the Activity Room on March 24th @ 1 p.m.!



← NOW LOOKING FOR...



The Kalispell Senior Center is the activity place for fun, laughter, and fellowship!

We offer a variety of exercise classes, cards & games, music, art, dance, presentations, van trips and more!

DO YOU HAVE ANY FAVORITE RECIPES OR CRAFTS TO CELEBRATE EASTER? SEND THEM TO US AND YOU MIGHT BE FEATURED IN THE NEXT ISSUE!

EMAIL TO: [email@kalispellseniorcenter.us](mailto:email@kalispellseniorcenter.us)

DO YOU HAVE EXPERIENCE WITH RUNNING AN ETSY STORE? WE'RE HOPING YOU CAN TRAIN US ON THE INS AND OUTS. LET US KNOW!

EMAIL TO: [email@kalispellseniorcenter.us](mailto:email@kalispellseniorcenter.us)

# MARCH 2025 KALISPELL SENIOR CENTER'S GAZETTE



40-11th St West, Ste 110, Kalispell, MT 59901

406-609-5351 [email@kalispellseniorcenter.us](mailto:email@kalispellseniorcenter.us)

### Statement of Purpose:

The association is organized and operated exclusively for charitable purposes to promote and enhance the health, well-being, social, cultural, and intellectual activities of citizens 55 or older. The focus is on seniors residing in the general area of the city of Kalispell, MT.

### FUN FACTS ABOUT ST. PATRICK'S DAY



The shamrock is said to have been popularized by St. Patrick who used the iconic shape to explain the Holy Trinity while preaching.

St. Patrick wore blue, not green. All surviving artworks of St. Patrick show him wearing blue robes.

Guinness Beer is served 819% more often on St. Patrick's Day than any other day of the year.

## WELCOME!

**KATHY NORLANDER**  
**SALLY SPENCER**  
**DAN BRIGGS**  
**KIMBERLY BRIGGS**

### BOARD OF DIRECTORS

Gerri Backes, President  
 John Bowman, Vice President  
 Bob Spoklie, Judene Jedlicka, Barb Pearson,  
 Barbara Woodhouse,  
 Carol Oberndorfer, Lee Heser, Mike Cartee



Activity Meeting 3/3@1:00  
 (Small Conference Room)  
 Board Meeting 3/11@9:30  
 (Large Conference Room)

Meeting Announcements!